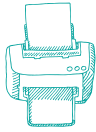


# My CIDP Symptom Tracker

## For tracking my treatment progress with GAMUNEX-C

Get the most out of your treatment with GAMUNEX-C by following these simple steps to record and discuss your symptoms:



Print out this form



Complete the survey



Share the results with your doctor

Use this form once a week for the first 3 months of treatment, and use it once a month after that. Sharing these results can help your doctor look for any changes in your CIDP symptoms and find the best treatment regimen for you.

Please indicate how true each statement has been\* Not at all = 0 A little bit = 1 A lot = 2

Date of weekly or monthly completion	/ /	/ /	/ /	/ /
I am frustrated by my CIDP				
I am bothered by pain from CIDP				
I am off balance when walking because of my CIDP				
I have trouble getting dressed because of my CIDP				
I have trouble sleeping because of my CIDP				
I am bothered by my limitations in performing work (including work at home) because of my CIDP				
I have trouble driving because of my CIDP				
I am dependent on others because of my CIDP				
I am depressed about my CIDP				
I have fallen because of my CIDP				
I am preoccupied with my CIDP				
I am unable to do all the leisure activities that I want to do because of my CIDP				
I am worn out because of my CIDP				
I have trouble eating because of my CIDP				
I have trouble doing activities around the house				
<b>Total score</b>				

\*Adapted from Gwathmey KG, et al.<sup>1</sup>

**Make sure to discuss your responses and your total score with your doctor.**

**GRIFOLS**

Please see Important Safety Information on the reverse side and refer to accompanying full [Prescribing Information](#) for GAMUNEX-C.

# Important Safety Information

GAMUNEX®-C (immune globulin injection [human], 10% caprylate/chromatography purified) is approved to treat primary humoral immunodeficiency disease (PIDD) in patients 2 years of age and older. If you have PIDD, you may take GAMUNEX-C under the skin (subcutaneously) or in a vein (intravenously). GAMUNEX-C is also approved to treat idiopathic thrombocytopenic purpura (ITP) in adults and children and chronic inflammatory demyelinating polyneuropathy (CIDP) in adults. If you have ITP or CIDP, you may only take GAMUNEX-C intravenously.

**If you take GAMUNEX-C or a similar immune globulin product, you could experience a serious and life-threatening blood clot (thromboembolism), which may include pain and/or swelling of an arm or leg with warmth over the affected area, discoloration of an arm or leg, unexplained shortness of breath, chest pain or discomfort that worsens on deep breathing, unexplained rapid pulse, numbness, or weakness on one side of the body. You are more likely to develop a blood clot if you have a history of hardening of the arteries (atherosclerosis), stroke, heart attack, or heart failure (low volume of blood pumped by the heart). You may also be more likely to get a blood clot if you are elderly, if you have a blood clotting disorder, if you are inactive for long periods of time (such as long bed rest), if you use estrogens, or if you have thickening of your blood. For patients at risk, GAMUNEX-C should be administered at the lowest dose and slowest infusion rate that is practical. However, blood clots may occur in the absence of any of the known risk factors. Patients should be well hydrated by drinking enough water before GAMUNEX-C is administered. Tell your doctor immediately if your medical history is similar to what is described here, and especially if you start having any of these symptoms while taking GAMUNEX-C.**

**If you take GAMUNEX-C or a similar immune globulin product intravenously, you could experience serious kidney disease and death. You may have symptoms of decreased urination, sudden weight gain, swelling in your legs (edema), or shortness of breath. You are more likely to develop serious kidney disease if you already have a kidney problem, have Type II diabetes mellitus, or are older than 65. You are more likely to develop serious kidney disease if you are dehydrated, have a blood infection (sepsis), have high protein content in your blood, or if you are receiving other medicines that are harmful to your kidneys. Tell your doctor immediately if your medical history is similar to what is described here, and especially if you start having any of these symptoms while taking GAMUNEX-C.**

**You are more likely to develop serious kidney disease if you take an intravenous immune globulin product that contains sugar (sucrose). GAMUNEX-C does not contain sugar. If your situation makes you more likely to experience serious kidney disease, you should take GAMUNEX-C at the lowest concentration available and the slowest infusion rate that is practical.**

Do not take GAMUNEX-C if you have an allergy to immune globulin. Tell your doctor if you have had a serious reaction to other medicines that contain human immune globulin. Also tell your doctor if you have immunoglobulin A (IgA) deficiency. If you have a serious reaction while taking GAMUNEX-C, stop taking it immediately and tell your doctor.

Periodic monitoring of kidney function and urine output is particularly important in patients more likely to experience severe kidney disease.

You could experience other serious and life-threatening problems due to immune globulin. You could get aseptic meningitis (a type of brain inflammation with symptoms of severe headache, stiff neck, fatigue, fever, sensitivity to light, painful eye movements, nausea, and vomiting), a blood problem called hemolytic anemia (common symptoms include increased heart rate, fatigue, yellow skin or eyes, and dark-colored urine), and/or a lung problem called transfusion-related acute lung injury (commonly referred to as TRALI). TRALI is a condition where you build up fluid in the lungs (called pulmonary edema) that is not the result of heart failure.

If you have higher than normal body fluid volumes or if you have a condition where increasing body fluid volume may be a concern, a higher dose, such as 1g/kg for 1-2 days, is not recommended.

Because GAMUNEX-C is made from human blood, it may carry a risk of transmitting infectious agents such as viruses, the variant Creutzfeldt-Jakob disease (vCJD) agent, and, theoretically, the Creutzfeldt-Jakob disease (CJD) agent.

You may not take GAMUNEX-C subcutaneously if you have ITP. **If you have ITP and take GAMUNEX-C subcutaneously, you could experience a very serious and life-threatening black and blue wound (hematoma, which is a pocket of blood within a tissue).**

After you take GAMUNEX-C, your blood antibody levels may rise, which could cause some blood antibody tests to give false results.

The most common side effects in a clinical study with PIDD patients who got subcutaneous injections of GAMUNEX-C were infusion-site reactions such as redness, swelling, and itching; extreme tiredness; pain in the region of the head or neck; a runny nose, nasal congestion, sneezing, cough, and sputum production; joint pain; loose stools; a sensation of unease and discomfort in the upper stomach; swelling of the tissue lining the sinuses; inflammation of the airways that carry air to your lungs; a feeling of unhappiness, sadness, melancholy, gloom, hopelessness, or low spirits; red rash or bumps, itchy, swollen, and tender skin with or without blisters or a burning feeling; a severe throbbing pain or a pulsing sensation, usually on just one side of the head; muscle pain; familiar infectious diseases such as the common cold or flu; and raised body temperature or fever. In clinical studies with PIDD patients who got GAMUNEX-C intravenously, the most common side effects were cough; irritation and inflammation of the mucous membrane inside the nose; sore throat caused by inflammation of the back of the throat; pain in the region of the head or neck; a condition in which your airways narrow and swell and produce extra mucus; a sensation of unease and discomfort in the upper stomach; raised body temperature or fever; loose stools; and swelling of the tissue lining the sinuses. In a clinical study with CIDP patients who got GAMUNEX-C intravenously, the most common side effects were pain in the region of the head or neck; raised body temperature or fever; abnormally high blood pressure; feelings of coldness accompanied by shivering; a noticeable change in the texture or color of your skin such as your skin becoming scaly, bumpy, itchy, or otherwise irritated; a sensation of unease and discomfort in the upper stomach; joint pain; and abnormal physical weakness or lack of energy. In clinical trials with ITP patients who got GAMUNEX-C intravenously, the most common side effects were pain in the region of the head or neck; a discoloration of the skin resulting from bleeding underneath, typically caused by bruising; vomiting, fever, nausea, rash, abdominal pain, back pain, and a pain or an uncomfortable feeling in the upper middle part of your stomach.

The most serious side effects in clinical studies were a blood clot to the lung (pulmonary embolism) in 1 patient with a history of this condition (in CIDP), a flare-up of an existing type of anemia (autoimmune pure red cell aplasia) in 1 patient (in PIDD), and heart inflammation (myocarditis) in 1 patient (in ITP).

**Please see accompanying full Prescribing Information for GAMUNEX-C.**

**You are encouraged to report negative side effects of prescription drugs to the FDA. Visit [www.fda.gov/medwatch](http://www.fda.gov/medwatch), or call 1-800-FDA-1088.**

**Reference:** 1. Gwathmey KG, Conaway MR, Sadjadi R, et al. The chronic acquired polyneuropathy-patient reported index (CAP-PRi) scale. Construction and validation of the chronic acquired polyneuropathy patient-reported index (CAP-PRi): A disease-specific, health-related quality-of-life instrument. *Muscle Nerve*. 2016;54(1):9-17.

**GRIFOLS**

© 2020 Grifols All rights reserved November 2020 US-GXC-2000336